

	Incold PE Bumper rails	INFOTEC N° B - 08.00
		REV. 00

Application: Bigisopanel

Incold PE bumper rails are suitable for the requirements of shops and cold rooms.

They can be applied to all surfaces subject to wear, especially door jambs, shelves, counters. They are suitable for installation in rooms and halls with passenger and vehicle traffic.

The bumper rails are made of high-quality plastic (PE-HD and PE 300) which guarantees:

- High impact resistance (≥ 10 kJ/m² DIN EN ISO 179)
- Long service life
- Good dimensional stability
- Low maintenance
- Easy to clean and resistant to grease and common detergents
- No moisture absorption ($\leq 0.01\%$ DIN EN ISO 62): more hygienic
- Temperature-resistant -50°C to +50°C
- High wear resistance at low temperatures
- Conforms to food contact (EU 10/2011 and FDA regulations)
- Low flammability: complies with flammability class B2 (DIN 4102)

The supplied bumper rails have the following features:

- Length 2000 mm
- Section (See FIG.1):
 - 120x10 mm (Code 02030139)
 - 200x20 mm (cod. 02030140)
- Colour White RAL 9010
- Shape: 5x45° bevels
- Holes: 4 holes provided along centreline Ø 6.5 countersunk 90°.

Storage:

Must be stored horizontally, dry, protected against cold and climatic influences.

Transport:

According to transport regulations it is non-hazardous goods. Take care against slipping.

Measures for reaction to fire:

Suitable extinguishing agents: Water, foam, CO₂, Dry powder extinguishing agents

Potential combustion products: CO, CO₂

Required protective equipment: Full protective equipment for firefighters.

Molten product must be cooled with water. Fire residues must be collected and disposed of according to local instructions

Recyclability:

Check recyclability according to location

Waste removal must be directed to a suitable landfill site or combustion plant in accordance with local regulations

EC waste catalogue classified as non-hazardous (EWC)

EC waste code: 12 01 05 plastic chips and shavings, 20 01 39 plastics

Assembly and processing instructions

- They can be modified directly on site with typical woodworking machines
- Inner/outer corners can be chamfered in the field (See FIG. 2)
- Silicone must be spread evenly between wall and bumper rail.

The silicone with approval for food contact supplied by INCOLD is:

- **04015052 F.Ili Zucchini MS Special N.**
- **Quantity:** 1 cartridge of 290 ml per 8 m.

- **Rivets** are required for wall fixing.

The choice of rivets depends on the thickness of the bumper rail and the nature of the panel faces to which the bumper rail is fixed.

We recommend the following table

Steel surfaces	Fiberglass surfaces / GLASINCOLD
Rivets Ø6 x 30 aluminium body	"FIORIV" flower rivets Ø5 x 30 Aluminium body - Steel nail
Code: 04920032	Code: 04920034
Quantity: No. 4 each 2 m of buffers	Quantity: No. 4 every 2 m of buffer

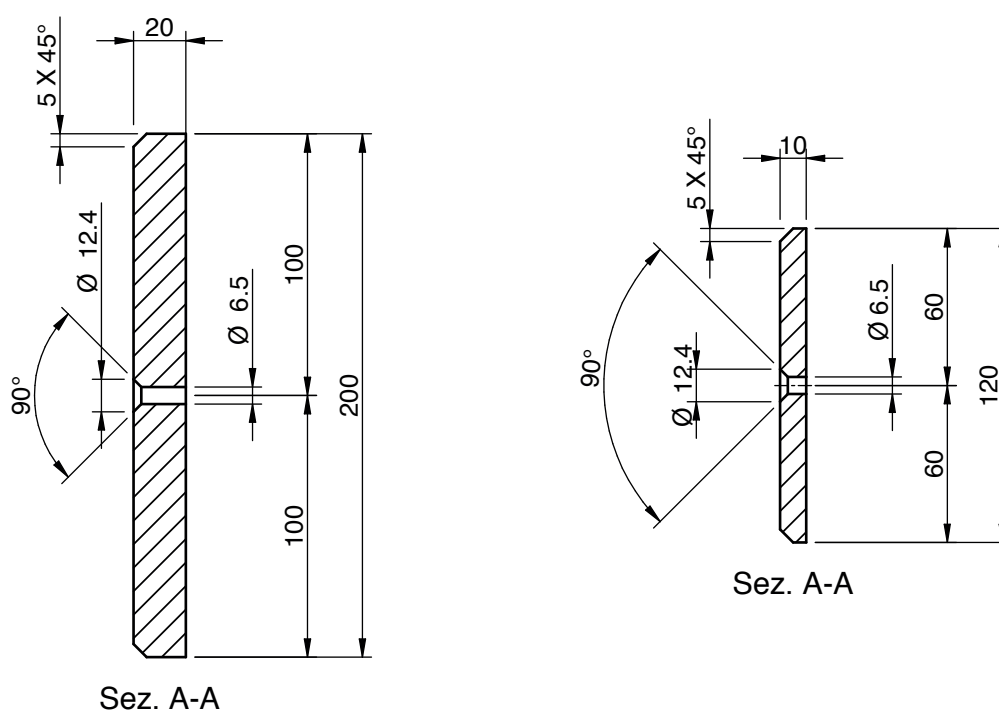


FIG.1: Bumper section

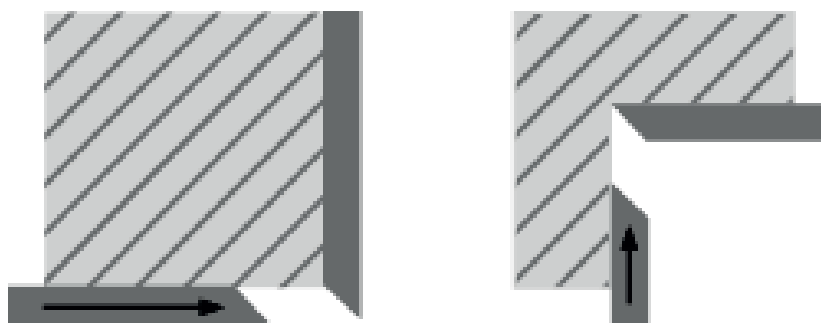


FIG. 2: chamfering for edge jointing